



BRADEN, BRADEN & BRADEN
A REAL ESTATE FIRM

Lease Availability



3355 POPLAR AVENUE, STE 307



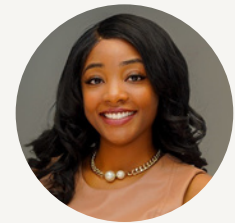
264 SQFT.

About The Space

This suite features an open, straight back floor plan that is perfect for a one man professional office. Nestled on the third floor, just off the elevator landing, this suite marries functionality and professional productivity-- a meticulous design for a solo practitioner.

LOCATED IN THE **Braden Investment Building**

Situated on the high-traffic Poplar Avenue near the Poplar/Highland intersection, the property is easy to get to. Restrooms in the building are safely under lock and key. Parking available in front, on side and in rear of building with additional reserved underground parking.



Traci Bailey
Affiliate Broker

Leasing & Management

(901) 881-2070

tbraden@bbbcre.com

